

COASTLINE COMMUNITY COLLEGE  
FIVE YEAR TREND ANALYSIS OF STUDENTS  
IN SUPPORT OF  
MASTER PLANNING RESEARCH

Institutional Research  
Prepared by Shañon Gonzalez

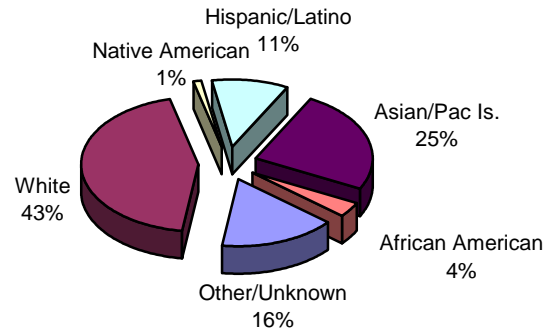


Coastline Community College

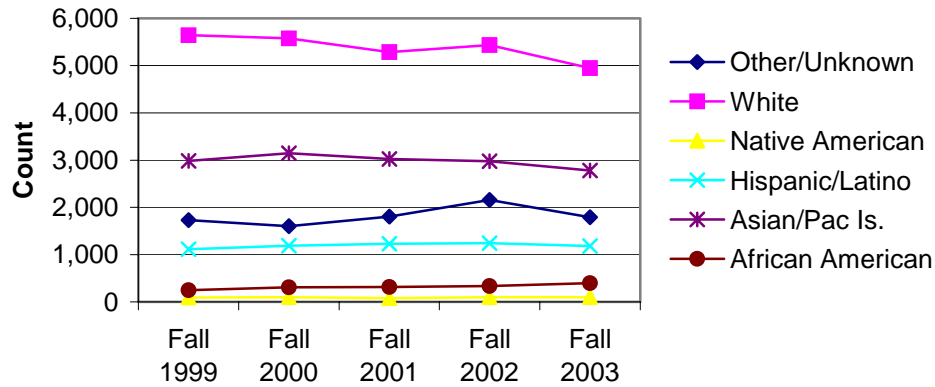
# Student Demographics

## Ethnicity

Fall 2002



CCC Unduplicated Headcount by Ethnicity



	Fall 1999	Fall 2000	Fall 2001	Fall 2002	Fall 2003
Other/Unknown	1,729	1,604	1,805	2,156	1,795
White	5,644	5,576	5,284	5,431	4,946
Native American	93	102	83	101	103
Hispanic/Latino	1,116	1,189	1,231	1,248	1,184
Asian/Pac Is.	2,985	3,148	3,026	2,977	2,781
African American	251	311	320	337	402
<b>Total</b>	<b>11,818</b>	<b>11,930</b>	<b>11,749</b>	<b>12,250</b>	<b>11,211</b>

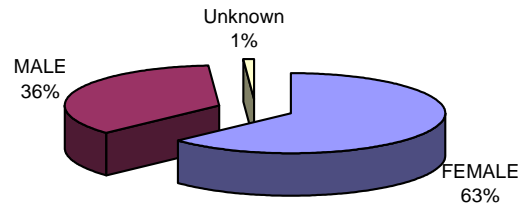
	Fall 1999	Fall 2000	Fall 2001	Fall 2002	Fall 2003
Other/Unknown	15%	13%	15%	18%	16%
White	48%	47%	45%	44%	44%
Native American	1%	1%	1%	1%	1%
Hispanic/Latino	9%	10%	10%	10%	11%
Asian/Pac Is.	25%	26%	26%	24%	25%
African American	2%	3%	3%	3%	4%
<b>Total</b>	<b>100%</b>	<b>100%</b>	<b>100%</b>	<b>100%</b>	<b>100%</b>

Coastline Community College

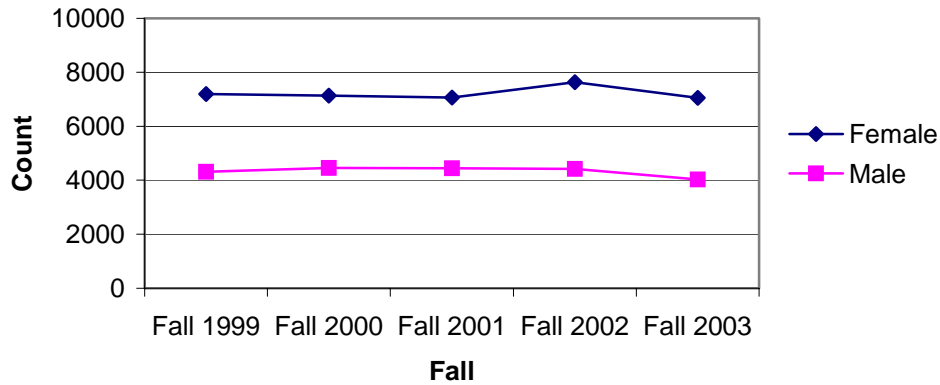
# Student Demographics

## Gender

Fall 2003



Unduplicated Headcount by Gender



Gender	Fall 1999	Fall 2000	Fall 2001	Fall 2002	Fall 2003
Female	7194	7136	7063	7628	7055
Male	4316	4456	4441	4421	4023
Unknown	308	338	245	201	133
<b>Total</b>	<b>11818</b>	<b>11930</b>	<b>11749</b>	<b>12250</b>	<b>11211</b>

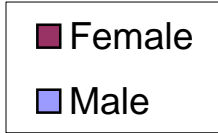
Gender	Fall 1999	Fall 2000	Fall 2001	Fall 2002	Fall 2003
Female	60.9%	59.8%	60.1%	62.3%	62.9%
Male	36.5%	37.4%	37.8%	36.1%	35.9%
Unknown	2.6%	2.8%	2.1%	1.6%	1.2%
<b>Total</b>	<b>100%</b>	<b>100%</b>	<b>100%</b>	<b>100%</b>	<b>100%</b>

-NOTES: Includes credit and non-credit students -Excludes Military students -Source: CCC MIS Student Basic Data, Fall 1999-Fall 2003

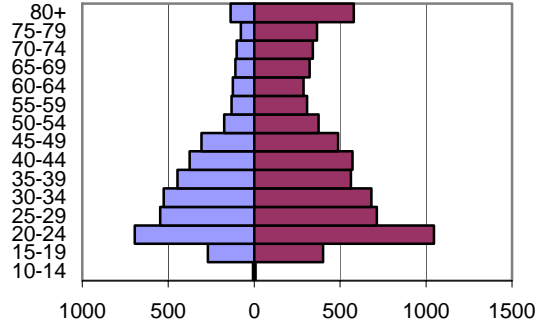
Coastline Community College

# Student Demographics

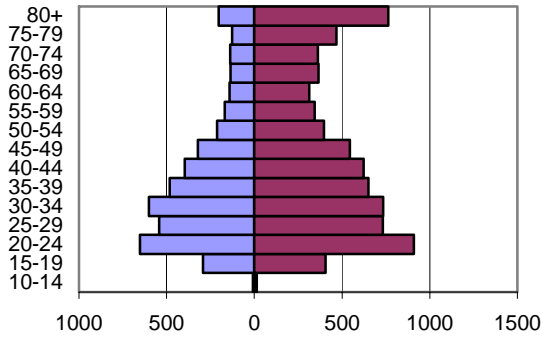
## Age



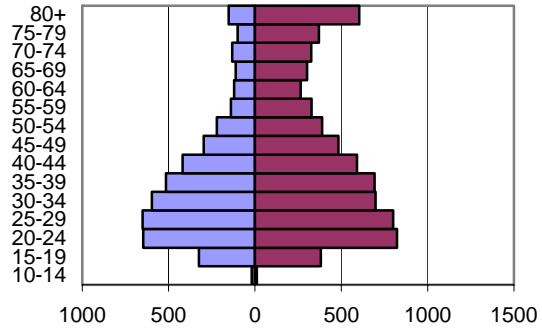
Fall 2003



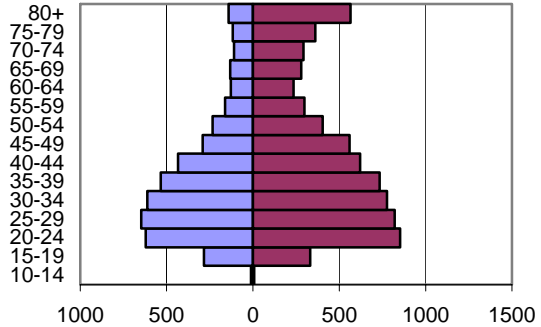
Fall 2002



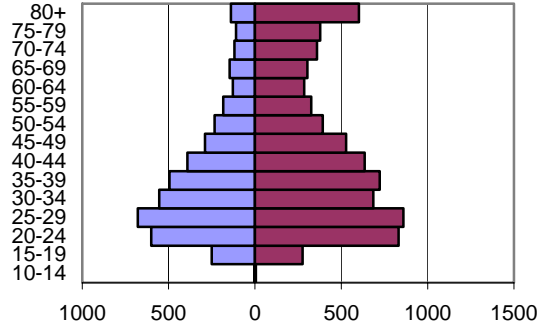
Fall 2001



Fall 2000

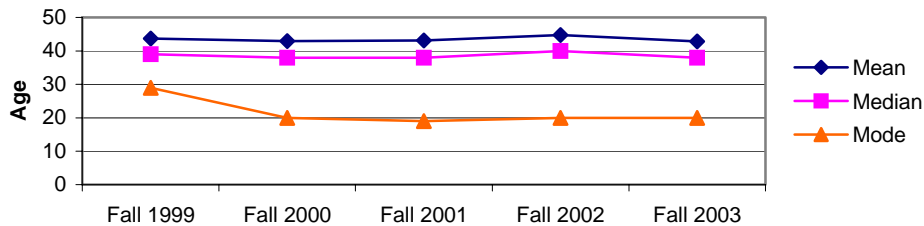


Fall 1999



	Fall 1999	Fall 2000	Fall 2001	Fall 2002	Fall 2003
N=	11510	11592	11504	12049	11078

### Average Age Indicators



	Fall 1999	Fall 2000	Fall 2001	Fall 2002	Fall 2003
Mean	43.7	42.9	43.1	44.7	42.8
Median	39	38	38	40	38
Mode	29	20	19	20	20

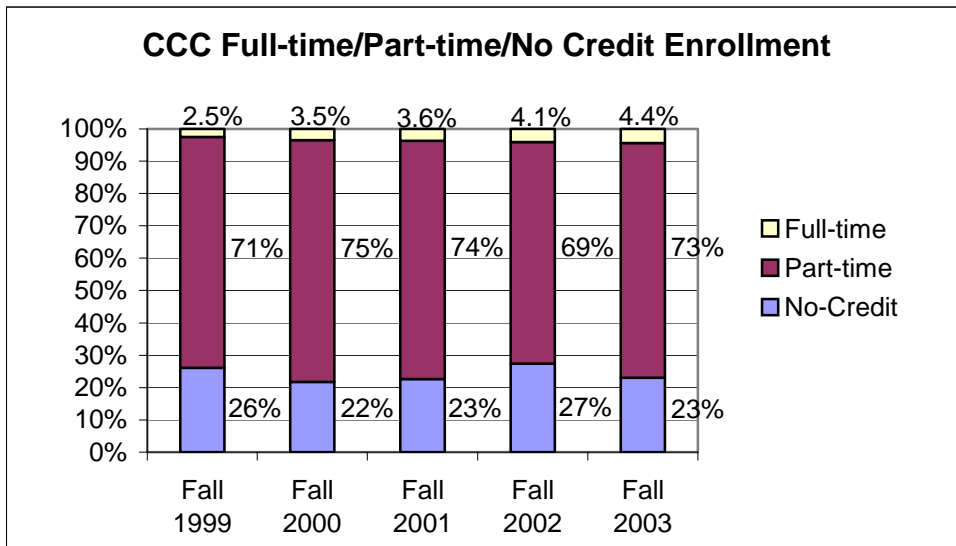
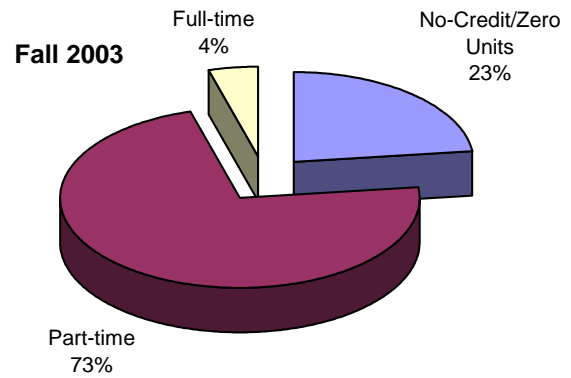
-NOTES: Includes credit and non-credit students -Excludes Military students -Unknown Gender not included  
 -Source: CCC MIS Student Basic Data, Fall 1999-Fall 2003 -Prepared by Shañon Gonzalez - CCC Institutional Research Department

Coastline Community College

# Student Demographics

## Unit Load

Full-time = 12 + units  
 Part-time = 0.5 to <12 units  
 No Credit = Enrolled in zero unit courses



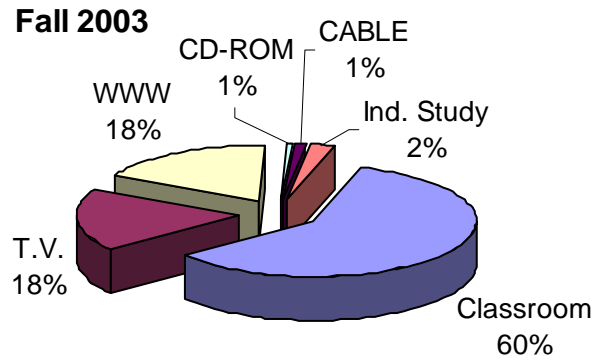
Unit Load	Fall 1999	Fall 2000	Fall 2001	Fall 2002	Fall 2003
No-Credit/Zero Units	3083	2601	2662	3355	2589
Part-time	8444	8913	8661	8394	8129
Full-time	291	416	426	501	493
<b>Total Enrollments</b>	<b>11818</b>	<b>11930</b>	<b>11749</b>	<b>12250</b>	<b>11211</b>

Unit Load	Fall 1999	Fall 2000	Fall 2001	Fall 2002	Fall 2003
No-Credit/Zero Units	26.1%	21.8%	22.7%	27.4%	23.1%
Part-time	71.5%	74.7%	73.7%	68.5%	72.5%
Full-time	2.5%	3.5%	3.6%	4.1%	4.4%
<b>Total Enrollments</b>	<b>100.0%</b>	<b>100.0%</b>	<b>100.0%</b>	<b>100.0%</b>	<b>100.0%</b>

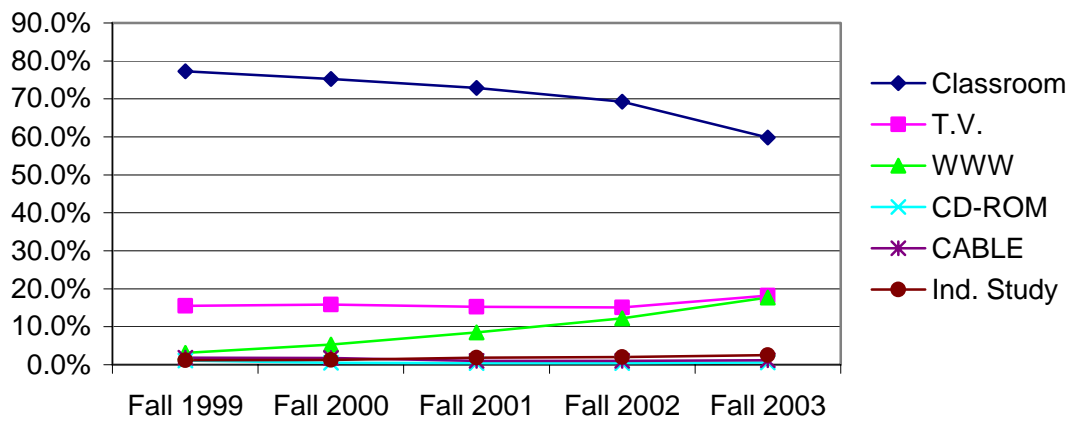
Coastline Community College

# Student Demographics

## Mode of Instruction



CCC Seats by Mode of Instruction



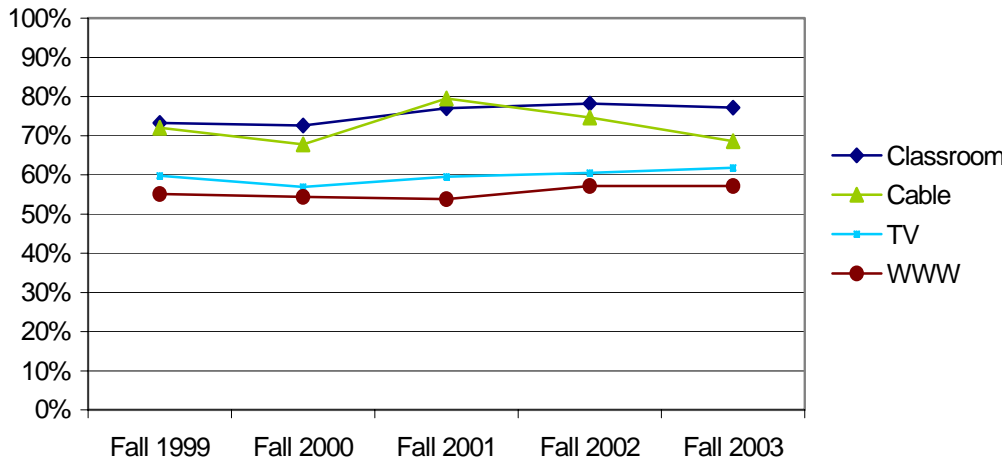
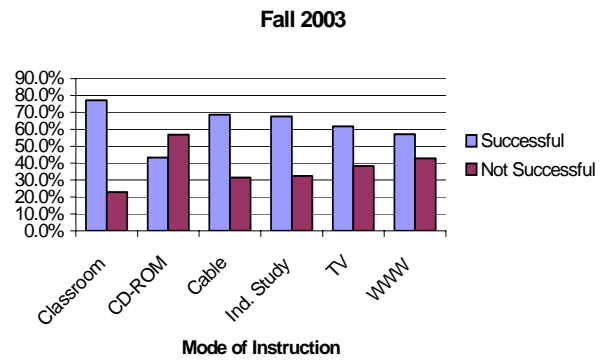
	Fall 1999	Fall 2000	Fall 2001	Fall 2002	Fall 2003
Classroom	16242	16002	15051	14387	11192
T.V.	3267	3376	3154	3139	3402
WWW	653	1127	1753	2542	3315
CD-ROM	237	104	82	93	112
CABLE	382	384	215	203	226
Ind. Study	243	266	384	417	467
<b>Total</b>	<b>21024</b>	<b>21259</b>	<b>20639</b>	<b>20781</b>	<b>18714</b>

	Fall 1999	Fall 2000	Fall 2001	Fall 2002	Fall 2003
Classroom	77.3%	75.3%	72.9%	69.2%	59.8%
T.V.	15.5%	15.9%	15.3%	15.1%	18.2%
WWW	3.1%	5.3%	8.5%	12.2%	17.7%
CD-ROM	1.1%	0.5%	0.4%	0.4%	0.6%
CABLE	1.8%	1.8%	1.0%	1.0%	1.2%
Ind. Study	1.2%	1.3%	1.9%	2.0%	2.5%
<b>Total</b>	<b>100.0%</b>	<b>100.0%</b>	<b>100.0%</b>	<b>100.0%</b>	<b>100.0%</b>

-NOTES: Includes duplicated seat counts -Excludes courses taken by Military students  
 -Source: CCC MIS Student Basic Data and Course Basic Data, Fall 1999-Fall 2003  
 Prepared by Shañon Gonzalez – CCC Institutional Research Department

Coastline Community College

# Successful Course Completion by Mode of Instruction Fall 1999-2003



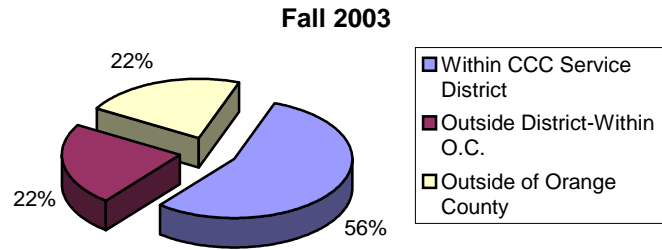
		Fall 1999	Fall 2000	Fall 2001	Fall 2002	Fall 2003
<b>Classroom</b>	Not Successful	2062	2247	1893	1572	1361
	Successful	5645	5936	6338	5631	4592
	% Successful	73%	73%	77%	78%	77%
	<b>Total</b>	<b>7707</b>	<b>8183</b>	<b>8231</b>	<b>7203</b>	<b>5953</b>
<b>Cable</b>	Not Successful	104	123	42	51	71
	Successful	267	258	163	150	155
	% Successful	72%	68%	80%	75%	69%
	<b>Total</b>	<b>371</b>	<b>381</b>	<b>205</b>	<b>201</b>	<b>226</b>
<b>TV</b>	Not Successful	1288	1425	1254	1224	1283
	Successful	1912	1878	1840	1874	2072
	% Successful	60%	57%	59%	60%	62%
	<b>Total</b>	<b>3200</b>	<b>3303</b>	<b>3094</b>	<b>3098</b>	<b>3355</b>
<b>WWW</b>	Not Successful	284	462	753	952	1206
	Successful	348	550	877	1271	1606
	% Successful	55%	54%	54%	57%	57%
	<b>Total</b>	<b>632</b>	<b>1012</b>	<b>1630</b>	<b>2223</b>	<b>2812</b>
<b>CD-ROM</b>	Not Successful	134	58	31	46	63
	Successful	76	43	49	47	48
	% Successful	36%	43%	61%	51%	43%
	<b>Total</b>	<b>210</b>	<b>101</b>	<b>80</b>	<b>93</b>	<b>111</b>
<b>Ind. Study</b>	Not Successful	79	120	158	142	151
	Successful	163	144	223	274	315
	% Successful	67%	55%	59%	66%	68%
	<b>Total</b>	<b>242</b>	<b>264</b>	<b>381</b>	<b>416</b>	<b>466</b>

-NOTES: Limited to 'Credit - Degree Applicable' courses -Source: CCC MIS Student Enrollment, Fall 1999-Fall 2003

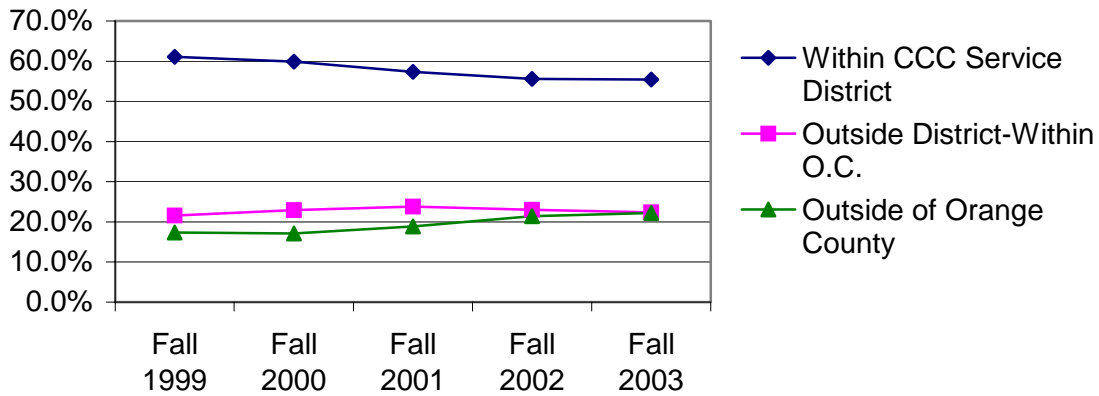
Coastline Community College

# Student Demographics

## Area of Residents



**CCC Student's Residential Area**  
(Based on Student's Home Zipcode)



	Fall 1999	Fall 2000	Fall 2001	Fall 2002	Fall 2003
Within CCC Service District	7216	7147	6736	6811	6211
Outside District-Within O.C.	2552	2737	2793	2818	2506
Outside of Orange County	2050	2046	2220	2621	2494
<b>Total</b>	<b>11818</b>	<b>11930</b>	<b>11749</b>	<b>12250</b>	<b>11211</b>

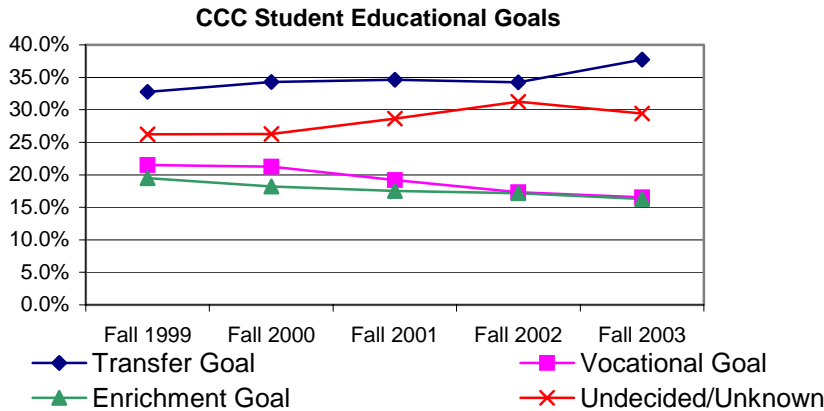
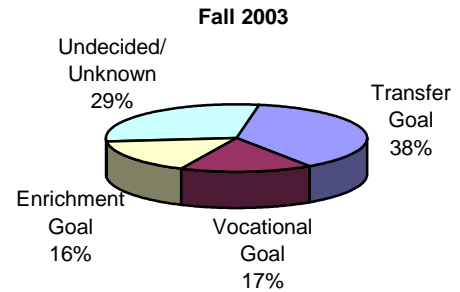
	Fall 1999	Fall 2000	Fall 2001	Fall 2002	Fall 2003
Within CCC Service District	61.1%	59.9%	57.3%	55.6%	55.4%
Outside District-Within O.C.	21.6%	22.9%	23.8%	23.0%	22.4%
Outside of Orange County	17.3%	17.2%	18.9%	21.4%	22.2%
<b>Total</b>	<b>100.0%</b>	<b>100.0%</b>	<b>100.0%</b>	<b>100.0%</b>	<b>100.0%</b>

Coast Community College Service District includes the cities of: Costa Mesa, Fountain Valley, Garden Grove, Huntington Beach, Newport Coast, Newport Beach, Seal Beach, Westminster, Midway City, Sunset Beach, and Surfside.

Coastline Community College

# Student Demographics

## Educational Goals



	Fall 1999	Fall 2000	Fall 2001	Fall 2002	Fall 2003
BA W/AA	2,058	2,145	2,231	2,334	2,318
BA W/O AA	1,815	1,946	1,836	1,861	1,915
AA W/O TRANSFER	385	330	329	376	367
2YR VOC DEG WO TRANS	110	120	102	103	108
2YR VOC CERT WO TRANS	681	711	590	473	395
PLANNING IN PROGRESS	220	193	160	181	150
NEW CAREER PREP	511	505	483	449	416
UPDATE JOB SKILLS	578	631	552	502	388
MAINTAIN CERT OR LIC	56	47	39	38	29
ED DEVELOPMENT	2,121	1,959	1,850	1,898	1,617
IMPROVE BASIC SKILLS	163	179	182	179	179
COMPLETE HS CRED OR GED	20	31	28	27	30
UNDECIDED	1,685	1,659	2,014	2,715	2,424
UNCOLLECTED/UNREPORTED	1,415	1,474	1,353	1,114	875
Total	11,818	11,930	11,749	12,250	11,211
	Fall 1999	Fall 2000	Fall 2001	Fall 2002	Fall 2003
BA W/AA	17.4%	18.0%	19.0%	19.1%	20.7%
BA W/O AA	15.4%	16.3%	15.6%	15.2%	17.1%
AA W/O TRANSFER	3.3%	2.8%	2.8%	3.1%	3.3%
2YR VOC DEG WO TRANS	0.9%	1.0%	0.9%	0.8%	1.0%
2YR VOC CERT WO TRANS	5.8%	6.0%	5.0%	3.9%	3.5%
PLANNING IN PROGRESS	1.9%	1.6%	1.4%	1.5%	1.3%
NEW CAREER PREP	4.3%	4.2%	4.1%	3.7%	3.7%
UPDATE JOB SKILLS	4.9%	5.3%	4.7%	4.1%	3.5%
MAINTAIN CERT OR LIC	0.5%	0.4%	0.3%	0.3%	0.3%
ED DEVELOPMENT	17.9%	16.4%	15.7%	15.5%	14.4%
IMPROVE BASIC SKILLS	1.4%	1.5%	1.5%	1.5%	1.6%
COMPLETE HS CRED OR GED	0.2%	0.3%	0.2%	0.2%	0.3%
UNDECIDED	14.3%	13.9%	17.1%	22.2%	21.6%
UNCOLLECTED/UNREPORTED	12.0%	12.4%	11.5%	9.1%	7.8%
Total	100.0%	100.0%	100.0%	100.0%	100.0%

Transfer Goal includes: BA W/AA, BA W/O AA  
 Vocation Goal includes: AA W/O Transfer, 2YR Vocational Degree WO Transfer, 2YR Vocational Certificate WO Transfer, Planning in Progress, New Career Prep, Update Job Skills, Maintain Certificate  
 Enrichment Goal includes: Educational Development, Improve Basic Skills  
 Undecided/Unknown includes: Undecided, Uncollected/Unreported

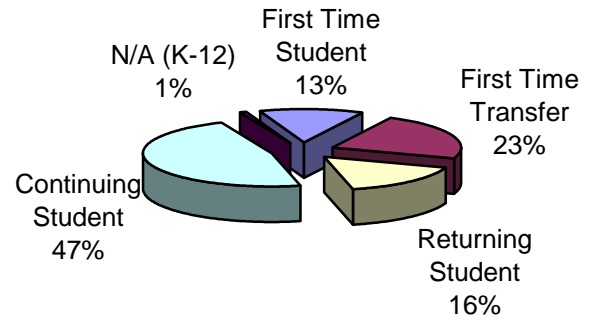
Coastline Community College

# Student Demographics

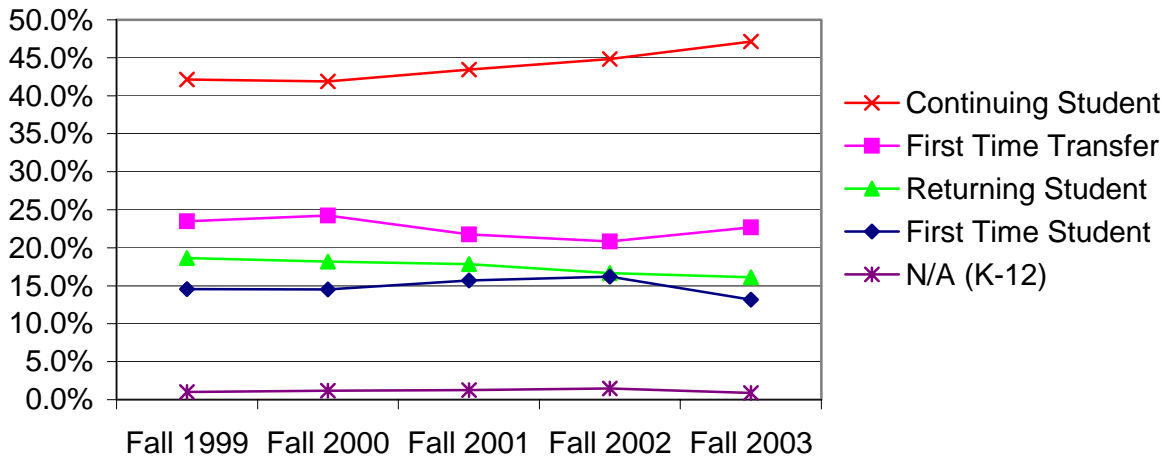
## Enrollment Status

### All Students

Fall 2003



CCC Enrollment Status - All Students



	Fall 1999	Fall 2000	Fall 2001	Fall 2002	Fall 2003
First Time Student	1722	1731	1845	1987	1477
First Time Transfer	2775	2891	2555	2552	2541
Returning Student	2201	2169	2099	2040	1807
Continuing Student	4980	4997	5101	5493	5285
N/A (K-12)	121	142	149	178	101
Unreported	19	0	0	0	0
<b>Total</b>	<b>11818</b>	<b>11930</b>	<b>11749</b>	<b>12250</b>	<b>11211</b>

	Fall 1999	Fall 2000	Fall 2001	Fall 2002	Fall 2003
First Time Student	14.6%	14.5%	15.7%	16.2%	13.2%
First Time Transfer	23.5%	24.2%	21.7%	20.8%	22.7%
Returning Student	18.6%	18.2%	17.9%	16.7%	16.1%
Continuing Student	42.1%	41.9%	43.4%	44.8%	47.1%
N/A (K-12)	1.0%	1.2%	1.3%	1.5%	0.9%
Unreported	0.2%	0.0%	0.0%	0.0%	0.0%
<b>Total</b>	<b>100%</b>	<b>100%</b>	<b>100%</b>	<b>100%</b>	<b>100%</b>

FIRST TIME STUDENT= A Student enrolled in college for the first time after High School. The first time a student enrolls in a primary term this element should be coded as '1', even if the student was previously enrolled in a summer session. For example, if a student enrolls at the college for the first time during a summer term and subsequently enrolls during a fall term the student should be coded as '1' for both terms.

FIRST-TIME TRANSFER STUDENT= A student enrolled at the reporting college for the first time and who transferred from another institution of higher education.

RETURNING STUDENT= A student enrolled at the reporting college after an absence of one or more primary terms.

CONTINUING STUDENT= A student who is enrolled in the current session and who was enrolled in the previous regular session.

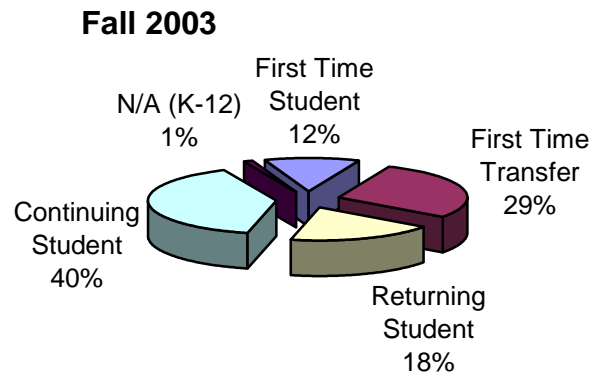
NOT APPLICABLE= A special admit student currently enrolled in K-12

Coastline Community College

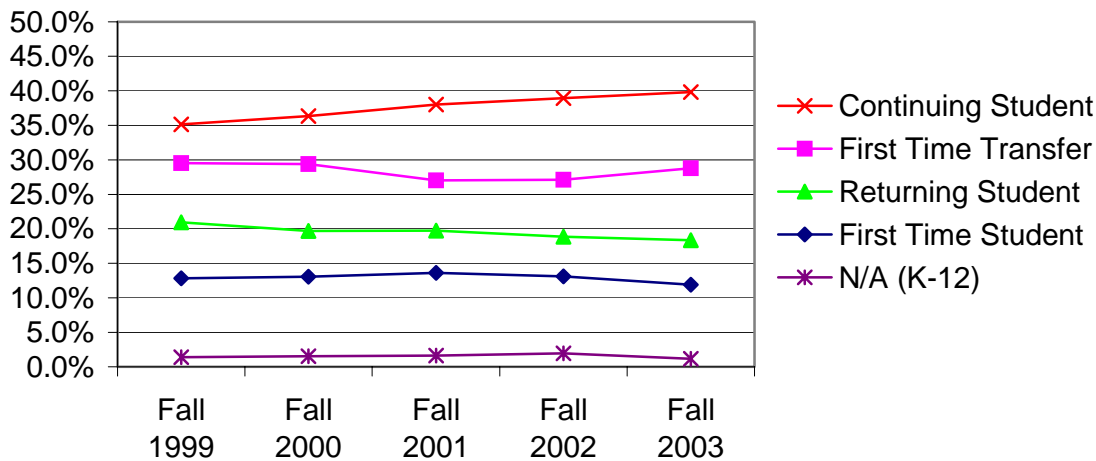
# Student Demographics

## Enrollment Status

### Credit Students Only



### CCC Enrollment Status - Credit Students Only



	Fall 1999	Fall 2000	Fall 2001	Fall 2002	Fall 2003
First Time Student	1124	1219	1239	1168	1027
First Time Transfer	2582	2741	2457	2411	2481
Returning Student	1833	1838	1792	1679	1583
Continuing Student	3072	3389	3451	3462	3431
N/A (K-12)	120	142	148	175	100
Unreported	19	0	0	0	0
<b>Total</b>	<b>8750</b>	<b>9329</b>	<b>9087</b>	<b>8895</b>	<b>8622</b>

	Fall 1999	Fall 2000	Fall 2001	Fall 2002	Fall 2003
First Time Student	12.8%	13.1%	13.6%	13.1%	11.9%
First Time Transfer	29.5%	29.4%	27.0%	27.1%	28.8%
Returning Student	20.9%	19.7%	19.7%	18.9%	18.4%
Continuing Student	35.1%	36.3%	38.0%	38.9%	39.8%
N/A (K-12)	1.4%	1.5%	1.6%	2.0%	1.2%
Unreported	0.2%	0.0%	0.0%	0.0%	0.0%
<b>Total</b>	<b>100%</b>	<b>100%</b>	<b>100%</b>	<b>100%</b>	<b>100%</b>

FIRST TIME STUDENT= A Student enrolled in college for the first time after High School. The first time a student enrolls in a primary term this element should be coded as '1', even if the student was previously enrolled in a summer session. For example, if a student enrolls at the college for the first time during a summer term and subsequently enrolls during a fall term the student should be coded as '1' for both terms.

FIRST-TIME TRANSFER STUDENT= A student enrolled at the reporting college for the first time and who transferred from another institution of higher education.

RETURNING STUDENT= A student enrolled at the reporting college after an absence of one or more primary terms.

CONTINUING STUDENT= A student who is enrolled in the current session and who was enrolled in the previous regular session.

NOT APPLICABLE= A special admit student currently enrolled in K-12

-NOTES: Includes credit students only -Excludes Military students -Source: CCC MIS Student Basic Data, Fall 1999-Fall 2003

Prepared by Shañon Gonzalez – CCC Institutional Research Department